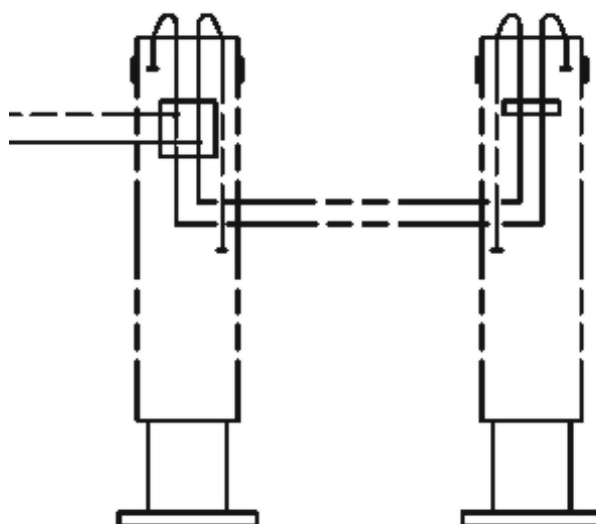


# M A N U A L

## O N

### REAR STABILIZERS OPTIMAL

**Manufacturer:**

Optimal-Vertrieb Opitz GmbH  
Eysoelden M 41  
91177 Thalmaessing  
Germany

Phone: ++ 49 – 9173 – 79 18 0  
Fax: ++ 49 – 9173 – 79 18 49  
eMail: [info@opitz-optimal.com](mailto:info@opitz-optimal.com)  
web: [www.opitz-optimal.com](http://www.opitz-optimal.com)

**Distributor:**

Prichard's Nursery Equipment LLC  
P.O. Box 549  
Portland, TN 37148  
U.S.A.

Phone: (423) 326 - 0753  
Fax: (615) 323 - 7667  
eMail: [sales@optimaltreespades.com](mailto:sales@optimaltreespades.com)  
web: [www.optimaltreespades.com](http://www.optimaltreespades.com)



## CONTENTS

	<b>Page</b>
Safety Warnings	2
1. Assembly	4
2. Putting into Service	4
3. Care and Maintenance	5
4. Appendix	
4.1 Attachment Points	6
4.2 Hydraulic System	7
6. Spare Parts List with Drawings	8
7. Warranty	





**WARNING**

**Operator must have read and understood instructions before working with rear stabilizers. Untrained operators can cause injury or death.**



**Safety Alert Symbol:** This symbol is used for important safety messages. When you see this symbol, follow the message to avoid personal injury or death.



Never use rear stabilizers without instructions. See machine signs (decals), and study Manual of rear stabilizers. The operation instructions for power unit and implements must be followed.



Before starting operations, bolts and hydraulic fittings must be checked to make sure they are free of damage and well tightened. Defective or loose hose pipes might cause serious injuries and therefore must be replaced immediately.



The operator is responsible for ensuring that no person is near the unit when in operation.



No one should be underneath the raised stabilizer pads or near shearing and pinching areas, or near any hydraulic components. We are advising the user that due to their functional positions and movements the danger areas cannot be furnished with protective guards.



Keep bystanders well away from work area.



When sight is limited, an assistant should direct the operator by hand signals.



When travelling, the rear stabilizers must be raised  
When moving and working on public roads, the traffic rules and regulations must be adhered to.



Never leave power unit with engine running or with lift arms up.



When doing cleaning, maintenance or repair work, make sure that rear stabilizers cannot move.



Never modify equipment. Use only original spare parts approved by manufacturer for these particular rear stabilizers.



Safety stickers have been placed on the rear stabilizers to warn the user of possible dangers. In case a safety sticker has been worn or destroyed, it must be replaced immediately. Safety stickers can be ordered with your distributor or the manufacturer. For ordering please use the part numbers listed on page 3. Fix the stickers on the locations marked on page 3.





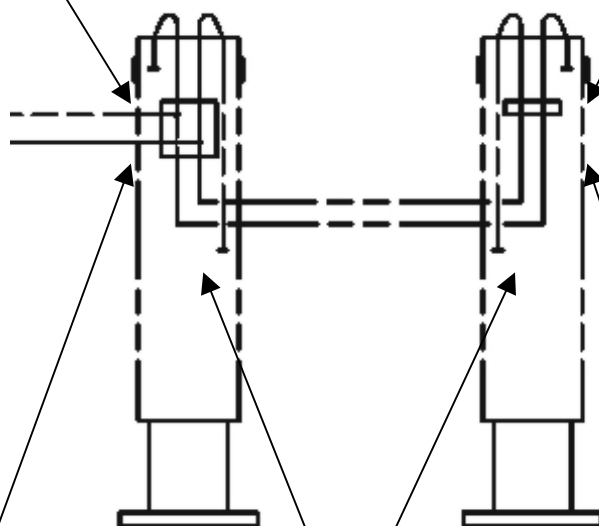
**MOVING MACHINERY  
KEEP HANDS AND  
FEET CLEAR**

Part N° 7118000014



**MOVING MACHINERY  
KEEP HANDS AND  
FEET CLEAR**

Part N° 7118000014



Part N° 7118000029



**MAQUINARIA EN MOVIMIENTO  
MANTENGA MANOS Y PIES  
ALEJADOS**

Part N° 7118000017



**MAQUINARIA EN MOVIMIENTO  
MANTENGA MANOS Y PIES  
ALEJADOS**

Part N° 7118000017



## **1. Assembly**



### **IMPORTANT:**

When doing assembly work, heed relevant instructions of manufacturers of power unit!

### **1.1 Mounting of the rear stabilizers**

The mounting plates are to be welded to the rear of the power unit, as shown on page 6. The rear stabilizers are to be bolted to the mounting plates at a height that provides space for the stroke of the cylinder and leaves sufficient clearance to the ground.

### **1.2 Hydraulic Installation**

The rear stabilizers work with a hydraulic working pressure of 140 – 200 bar (2000 – 2900 psi) and an oil flow of 40 – 60 l/min (11 – 16 GPM).

The hydraulic hoses A and B are to be connected to a valve as shown on drawing page 7.

If rear stabilizers are to be controlled by an Optimal valve bank, the two supply lines must be connected to the spare ports of the valve marked by cast-in “A” and “B”, as shown on table “Hydraulic System” of the pertaining tree spade manual.

## **2. Putting into Service**



### **IMPORTANT:**

The hydraulic disconnect of the tree spade and the power unit must match and must be connected properly. Faulty connections are extremely dangerous.

When operating the power unit, follow the instructions of the operating manual of the power unit !



### **3. Care and Maintenance**

#### **3.1 General**

After the initial 10 working hours, check all bolts and nuts and tighten, if necessary.

As a matter of routine, examine bolts before operation and tighten, if necessary.

#### **3.2. Hydraulic Hoses**

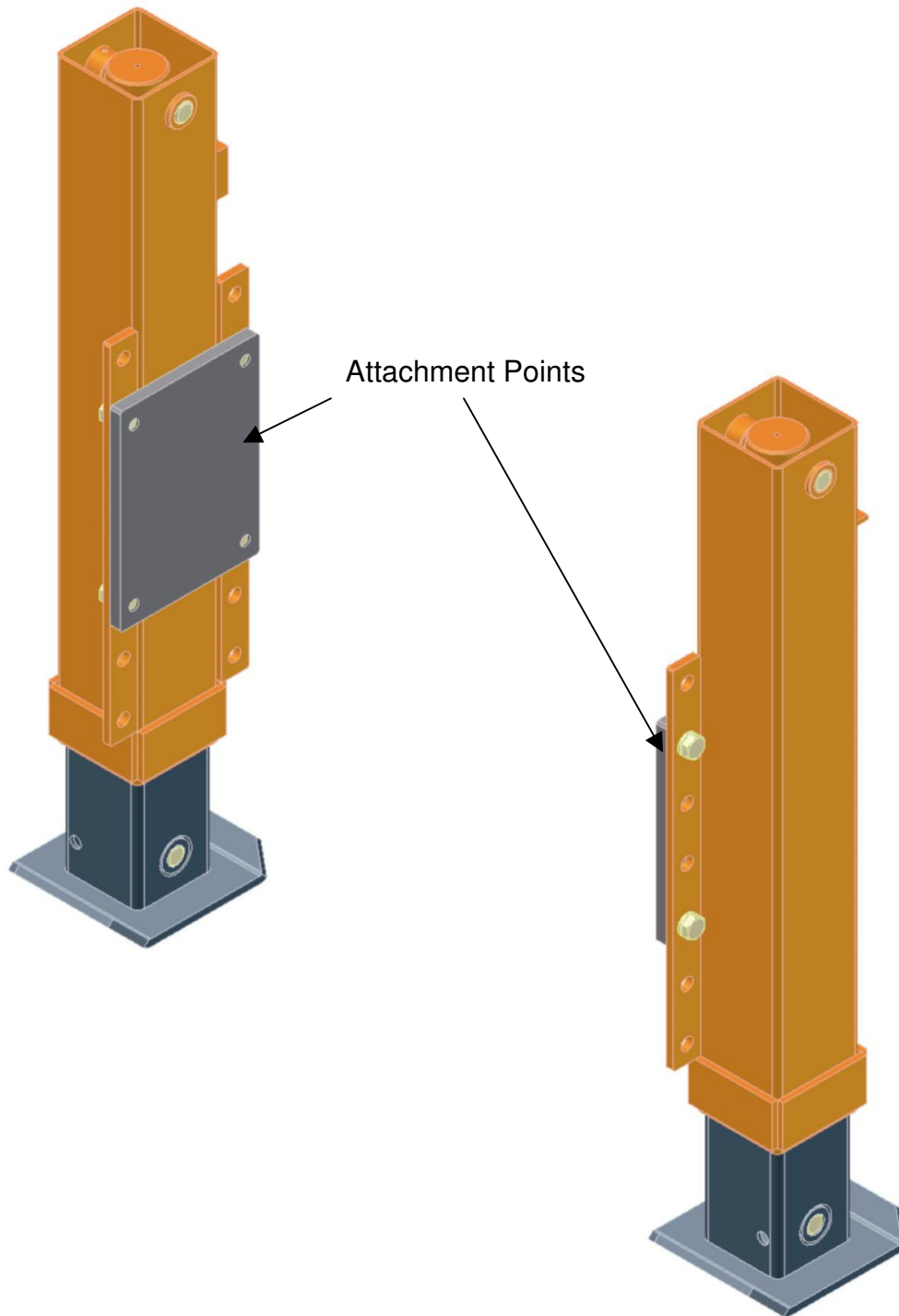
All hydraulic hoses must be inspected at least once per year. Damaged hoses must be replaced. At least after 6 years latest all hoses must be replaced.



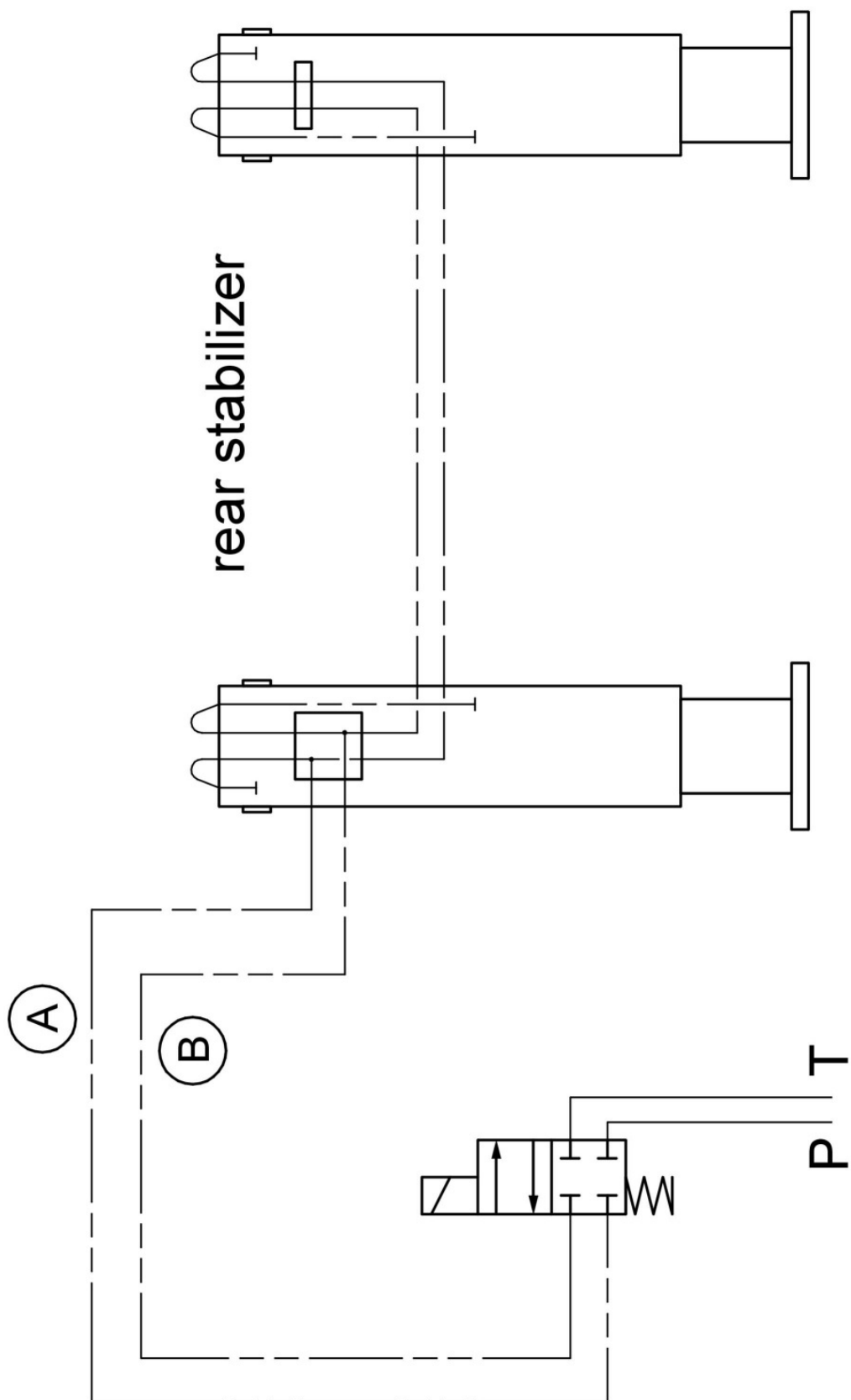
#### **IMPORTANT:**

Use original spare parts only !







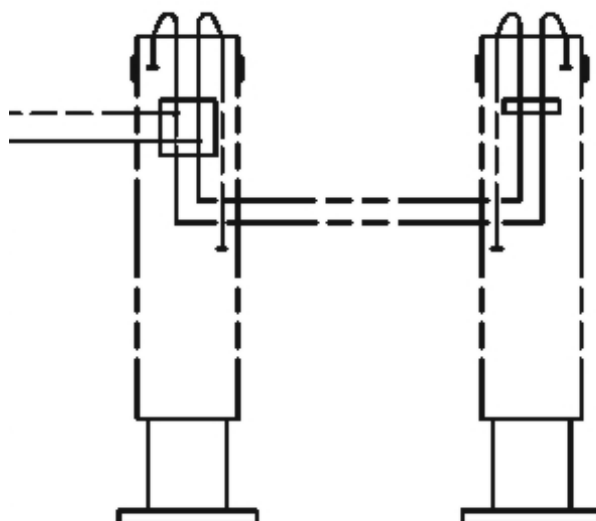




# **S P A R E P A R T S L I S T**

## **O N**

### **REAR STABILIZERS OPTIMAL**



**Manufacturer:**

**Optimal-Vertrieb Opitz GmbH  
Eysoelden M 41  
91177 Thalmaessing  
Germany**

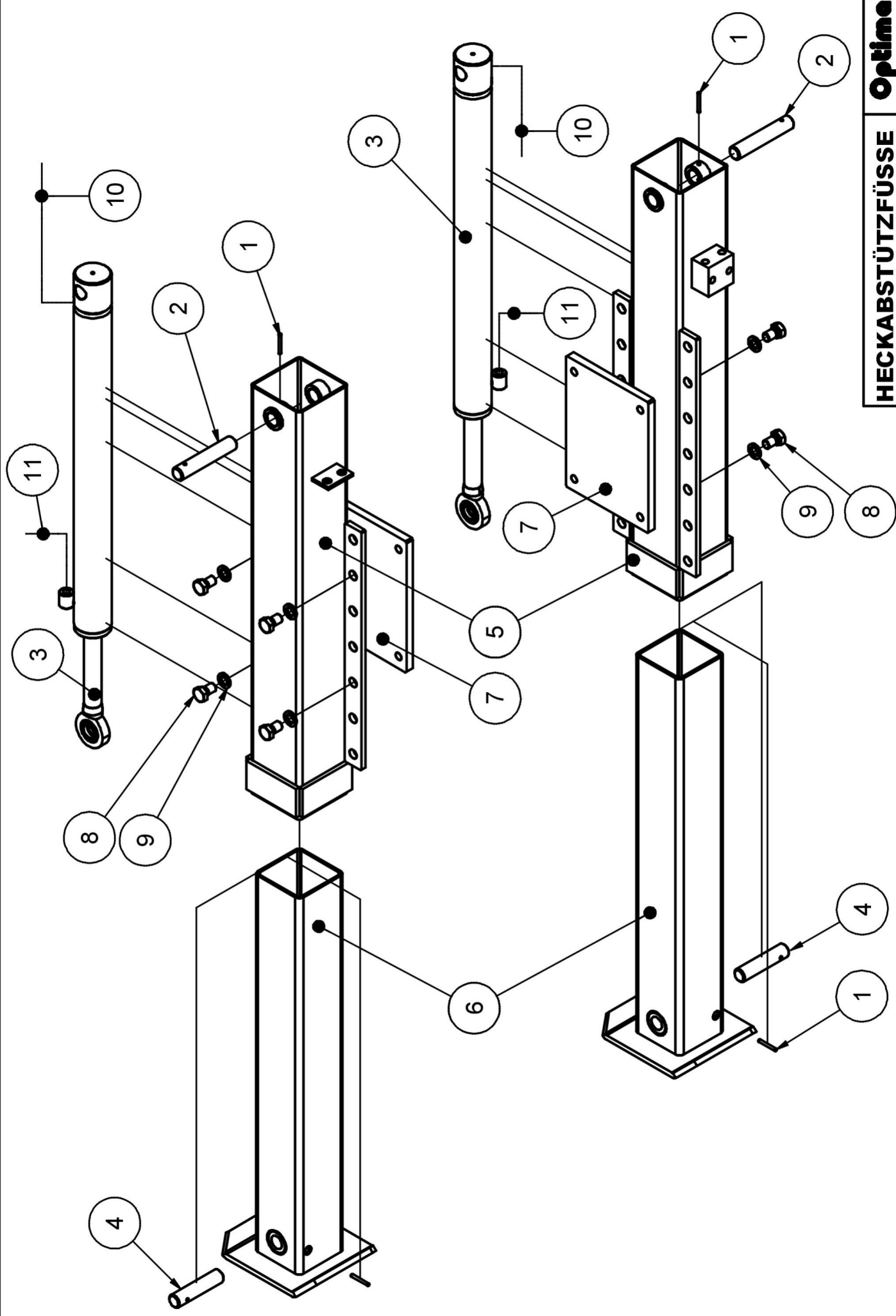
**Phone: ++ 49 – 9173 – 79 18 0  
Fax: ++ 49 – 9173 – 79 18 49  
eMail: [info@opitz-optimal.com](mailto:info@opitz-optimal.com)  
web: [www.opitz-optimal.com](http://www.opitz-optimal.com)**

**Distributor:**

**Prichard's Nursery Equipment LLC  
P.O.Box 250  
Harrison, TN 37341-0250  
U.S.A.**

**Phone: (423) 326 - 0753  
Fax: (423) 344 - 7064  
eMail: [sales@optimaltreespades.com](mailto:sales@optimaltreespades.com)  
web: [www.optimaltreespades.com](http://www.optimaltreespades.com)**



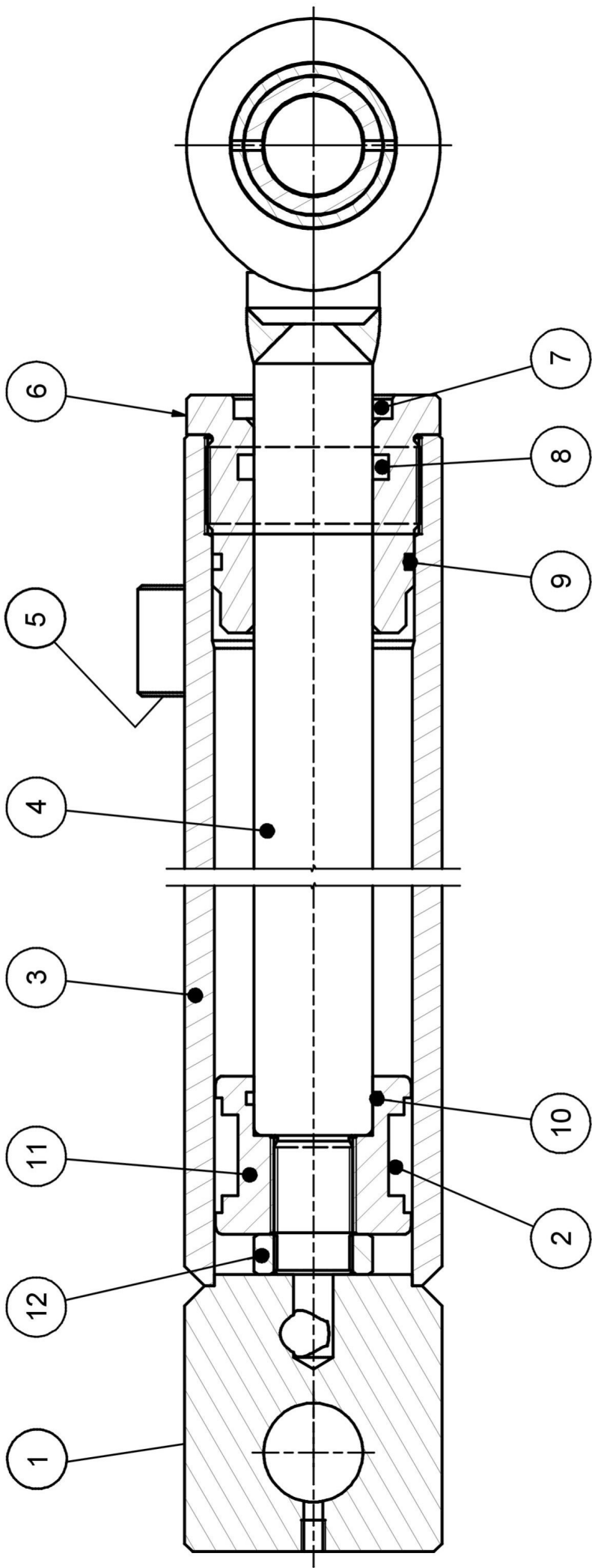




**Tafel – Table 1****Rear Stabilizers OPTIMAL - ERSATZTEILLISTE - SPARE PARTS LIST**

<u>Pos.</u> <u>Item</u>	<u>Menge</u> <u>Quantity</u>	<u>Bezeichnung</u> <u>Description</u>	<u>ET- Nummer</u> <u>Part Number</u>
1	2	grooved pin 5 x 60 DIN 1481	506705601481
2	1	pin 50003	30750003
3	1	cylinder for rear stabilizer	3010402
4	1	pin 50007	30750007
5	1	guide box 50050	39950050
6	1	sliding ram 50051	39950051
7	1	mounting plate 50052	39950052
8	4	bolt M 16 x 25 DIN 933	50116025933
9	1	spring washer M 16 DIN 127	50616
10	1	hydraulic hose	513062043011
11	1	hydraulic hose	513062105011







**Tafel – Table 2****Rear Stabilizers OPTIMAL - ERSATZTEILLISTE - SPARE PARTS LIST****Zylinder - Cylinder**

<u>Pos.</u> <u>Item</u>	<u>Menge</u> <u>Quantity</u>	<u>Bezeichnung</u> <u>Description</u>	<u>ET- Nummer</u> <u>Part Number</u>
1	1	hydraulic union	515070510813
2	1	piston seal	51604050038
3	1	cylinder body	30250300049
4	1	piston rod	3035030146
5	1	hydraulic union	515021000813
6	1	guide bush	3115030360
7	1	oil scraper	5160330
8	1	rod seal	5160230
9	1	O-ring 45,2 x 3	5170452030
10	1	O-ring 30 x 2,5	5170300029
11	1	piston	3125030240
12	1	nut	502201509360
	1	seal kit	516005030603





### **LIMITED WARRANTY**

Optimal-Vertrieb Opitz GmbH ("Opitz") warrants that this product will be free from defects in material and workmanship for a period of 6 months from the date of purchase (the "Warranty Period"). If, during the Warranty Period, this product proves to be defective, Opitz will remedy the defect by either repairing or replacing the product or any of its defective parts, at Opitz's option.

If you need warranty service, you must, prior to the lapse of the Warranty Period, file a claim, together with proof of purchase and your original Warranty Certificate received at the purchase of the product, with Prichard's Nursery Equipment, LLC; P.O. Box 250; Harrison, TN 37341-0250; USA. After a warranty claim is properly filed, Opitz or its designated representative will evaluate the warranty claim. This warranty is conditioned upon your reasonable cooperation with Opitz in the evaluation of your warranty claim and the implementation of any remedy. When supplying replacement product or parts under this warranty, Opitz reserves the right to substitute product or parts of comparable value and design for any discontinued designs. This warranty is not transferable and applies only to the original consumer purchaser.

Opitz does not assume any responsibility for failures, breakage or causes which result from abuse, misuse, negligence, faulty operation, unauthorized repair or alteration, accident, fire, winds, floods, moisture, other unfavorable atmospheric conditions or other causes beyond Opitz's reasonable control or from failure to operate or maintain the product in accordance with the Opitz Operation Manual (a copy of which is provided to you with the product) or from normal wear and tear under normal usage. **OPITZ EXCLUDES AND WILL NOT PAY ANY INCIDENTAL AND CONSEQUENTIAL DAMAGES ARISING OUT OF THE PURCHASE OR USE OF THE PRODUCT.** By this Opitz means any loss, expense or damage other than to the product itself that may result from a defect in the product. Some states do not allow the exclusion or limitation of incidental or consequential damages, so the above limitation or exclusion may not apply to you.

**THE DURATION OF ANY IMPLIED WARRANTIES ARE LIMITED TO THE DURATION OF THE COVERAGE PROVIDED BY THIS LIMITED WARRANTY AS INDICATED ABOVE; PROVIDED, HOWEVER, THAT NOTHING IN THIS LIMITED WARRANTY SHALL GIVE YOU ANY IMPLIED WARRANTIES YOU WOULD NOT OTHERWISE HAVE, EXTEND THE SAME BEYOND THEIR CUSTOMARY DURATION, OR MAKE OPITZ LIABLE FOR ANY IMPLIED WARRANTIES THAT IT WOULD NOT BE LIABLE FOR IF THIS LIMITED WARRANTY HAD NOT BEEN GIVEN.** Some states do not allow limitations on how long an implied warranty lasts, so the above limitation may not apply to you.

This warranty shall apply only to product that is purchased and used within the United States. This warranty gives you specific legal rights, and you may also have other rights that vary from state to state.

Date of Sale: ..... Product Sold: .....

Product Serial Number: ..... Expiration Date of the Warranty: .....

Name and Address of Buyer: .....

.....

.....

.....

Signature of Buyer: .....