

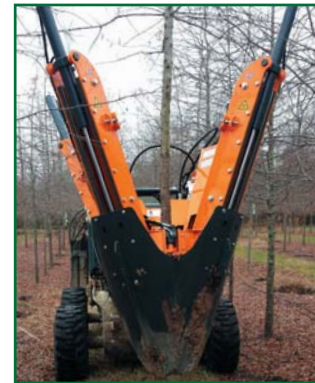


Optimal

optimal 36.25



Tree Spade



Requirements for Power Unit:

A Wheel-Loader, Skid Steer Loader, Telescopic loader

1 extra hydraulic circuit, double-acting, for implements attachment at front

- hydraulic working pressure 160 - 200 bar (2,300 - 3,200 lbs./in²)
- oil flow 40-60 l per minute (11-22 GPM)
- tipping load approx. 3.500 kg (5,000 lbs.)
- lift capacity approx. 2.000 kg (2,500 lbs.)
- type of attachment quick-change frame
- controls electro-hydraulic valves, individual blade control electric control element

B Farm Tractor

1 extra hydraulic circuit, double-acting, for implements at rear

- hydraulic working pressure 160 - 200 bar (2,300 - 3,200 lbs./in²)
- oil flow 40-60 l per minute (11-22 GPM)
- engine capacity, approx. 80 HP
- type of attachment lift mast HG 1500 with lateral slide
- controls 3 manual hydraulic valves for lift mast and electric control element for tree spade
- optional PTO-driven hydraulic pump and oil depot

C For Special Attachments

please inquire



Optimal

optimal 36.25



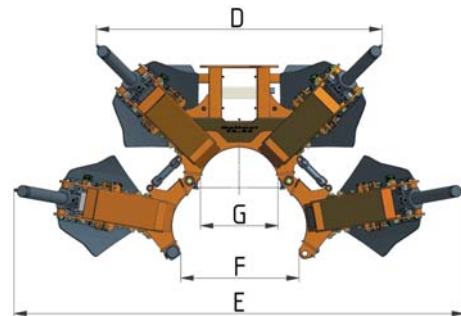
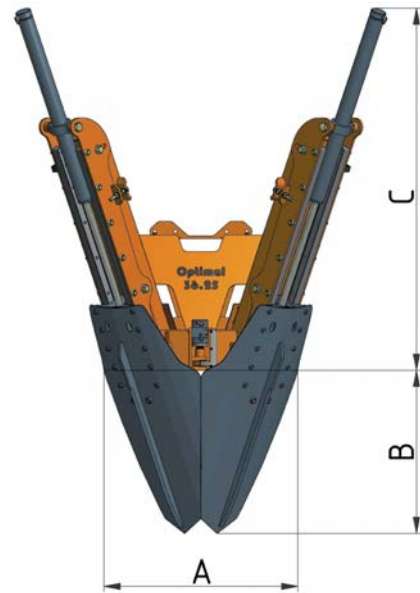
Tree Spade

Basic Machine:

upper rootball diameter, approx.	A	94 cm	(37")
rootball depth, approx.	B	80 cm	(31.5")
working height	C	178 cm	(70")
working width, gate closed	D	181 cm	(71")
working width, gate open	E	283 cm	(111")
clearance between open gate	F	76 cm	(30")
inner frame diameter	G	52 cm	(20.5")
weight, empty		940 kg	(2,068 lbs.)
volume of rootball, approx.		0,23 m ³	(8.1 FT ³)
number of blades		4	

Special Features & Improvements

- Individual spade control
- collapsible spade towers for fast and precise spade alignment
- sturdy frame with enlarged cross-section and reinforced hinges
- improved gate lock system stabilizes main frame
- mechanism for infinitely adjustable and precise spade alignment
- self-lubricating bearings, abrasion-resistant
- improved hydraulic system for faster operation

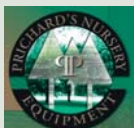


Electric control element



Distributor:

Prichard's Nursery Equipment, LLC
 604 West Market Street
 P.O. Box 549
 Portland, TN 37148
 USA
 Phone: (423) 326-0753
 Fax: (615) 323-7667
 sales@optimaltreespades.com
 www.optimaltreespades.com



Manufacturer:

Optimal-Vertrieb Opitz GmbH
 Eysölden M 41
 91171 Thalmässing
 Germany
 Tel. + 49 91 73/79 18 0
 Fax. + 49 91 73/79 18 49
 info@opitz-optimal.com
 www.opitz-optimal.com

